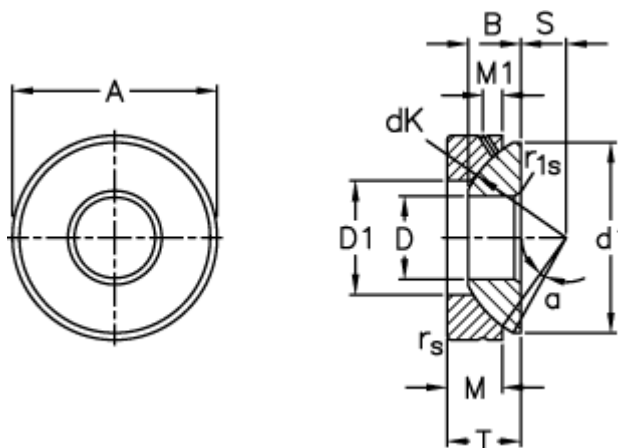


Article number: 03511050

Description: Fluro Rod end GE 50AX

## Measures



A	= 130 0 -0,018	M1	= 10
B	= 33	rs, r1s min	= 1
D	= 50 0 -0,012	S	= 30
d1 max	= 120	Static axial load C0 (kN)	= 3250
D1 min	= 70	T	= 42,5 +0,25 -0,40
dK	= 139	Tilt angle	= 6
Dynamic axial load C (kN)	= 655	Weight	= 3140
M	= 30.5		